



Horse Breeds

PAINT

OBJECTIVES

**I CAN LIST THE TWO BREEDS
THAT MAKE UP A PAINT**

**I CAN LIST AND DESCRIBE THE
THREE COLOR PATTERNS**

**I CAN DESCRIBE THE
DIFFERENCE BETWEEN “PAINT”
AND “PINTO”**

CROSS BREED

The base of incomplete,
spotted, coats of complete
breeds

Thoroughbred

Quarter-Horse

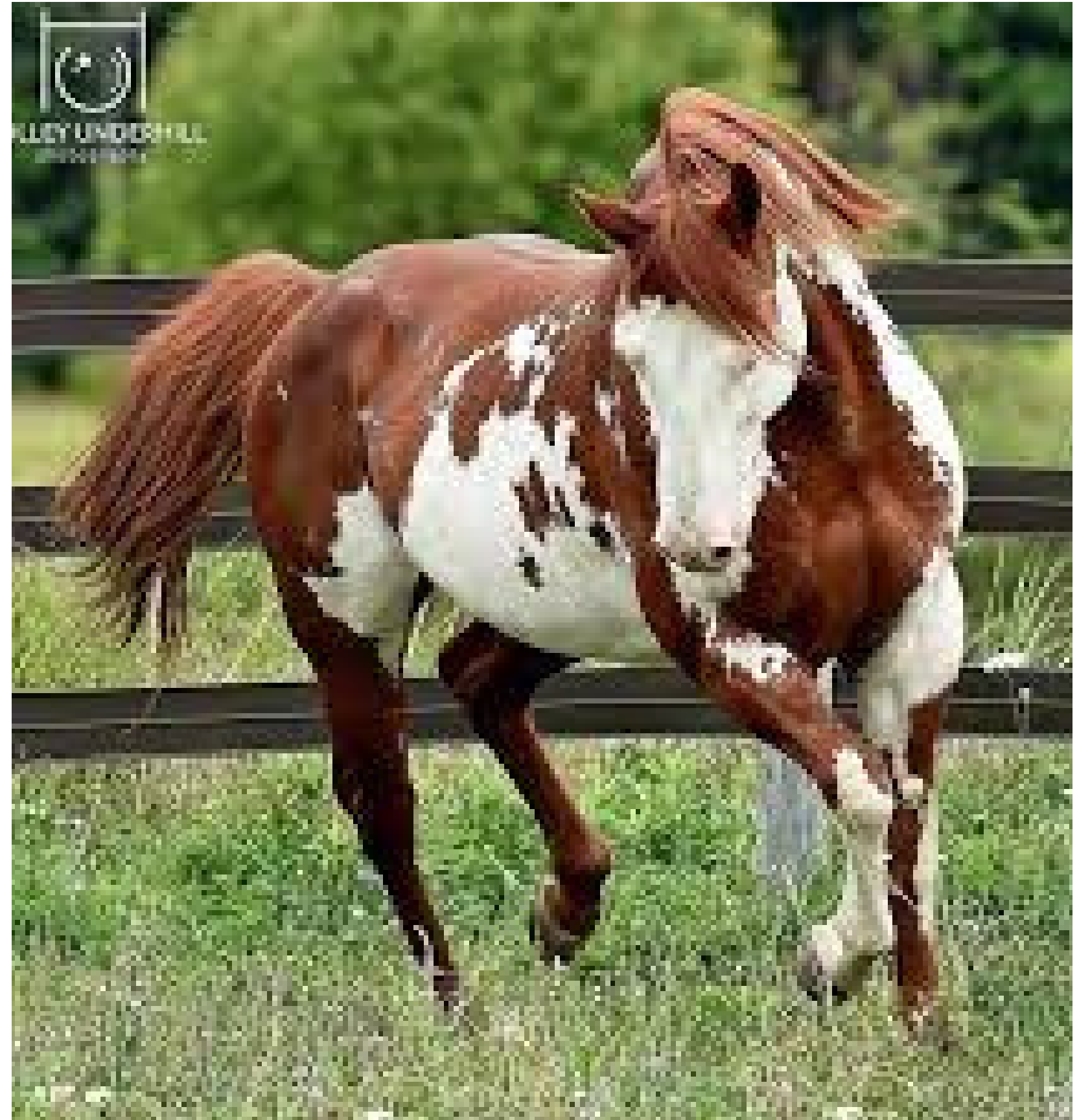
Pattern **TOBIANO**

- Dark color covers both side flanks
- All four legs are generally white
- Spots of distinct ovals and round patterns
- Solid dark head with blaze, strip, snip, or star
- Tail two colors



Pattern **OVERO**

- White usually doesn't cross back
- One or all four legs are dark
- White is irregular or splotchy
- Bald or Bonnet faces of white
- Tail one color



Pattern **TOVERO**

- Dark pigment around ears that may extend to the forehead or eyes
- Both or one blue eyes
- Chest spots in various sizes may extend up the neck
- Flank spots vary in size
- Spots at base of tail



Pattern **SOLID PAINT**

- Not all foals have flashy colors and patterns
- Some paints can still look like this horse to right
- Solid Color with face marking or not

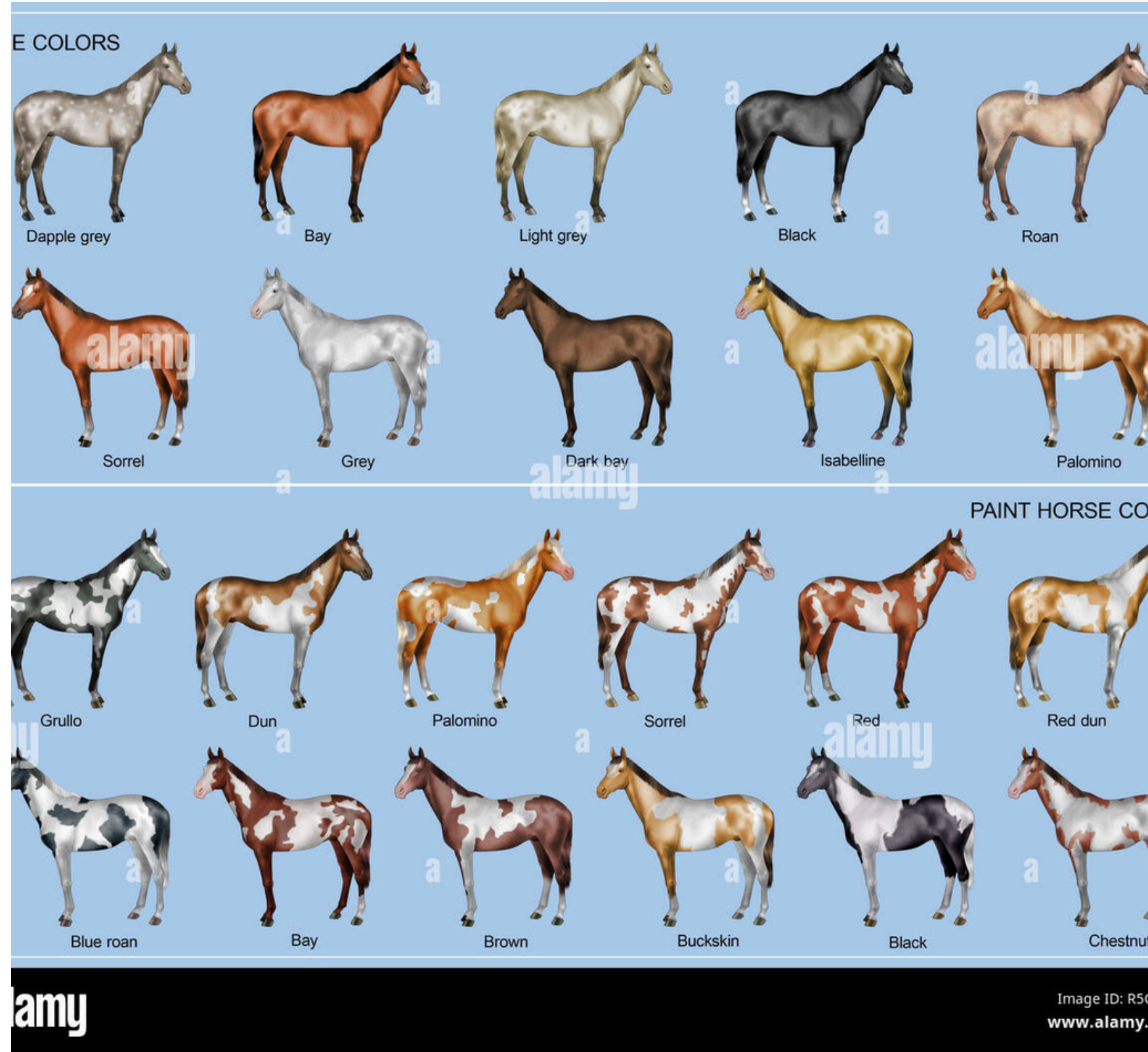


PAIN'T VS. PINTO

- Paint is a breed and Pinto is a set of coat patterns
- Paint is short for American ain't Horse
- Pinto is a loose term to describe bold white colorings



Coat Colors



- Black
- Chestnut
- Brown
- Carmello
- Bay
- Palomino
- Bay Roan
- Blue Roan
- Red Dun
- Red Roan
- Buckskin
- Dun
- Sorrel
- Gray
- Grullo
- Perlino

WORKS CITED

“Paint Horse Breed of
America.” Apha, 18 Sept. 2023,
apha.com/breed/colorreq/.