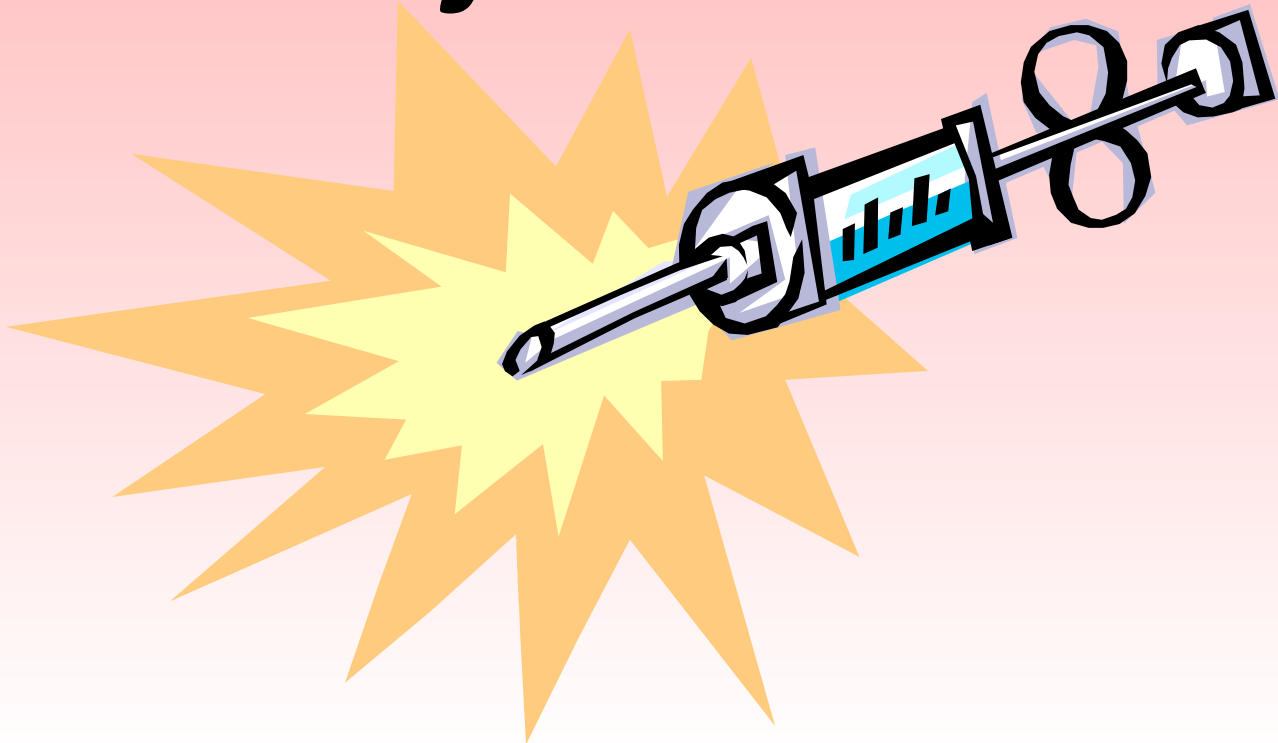


# WHAT INFO SHOULD BE ON THIS PACKAGE?



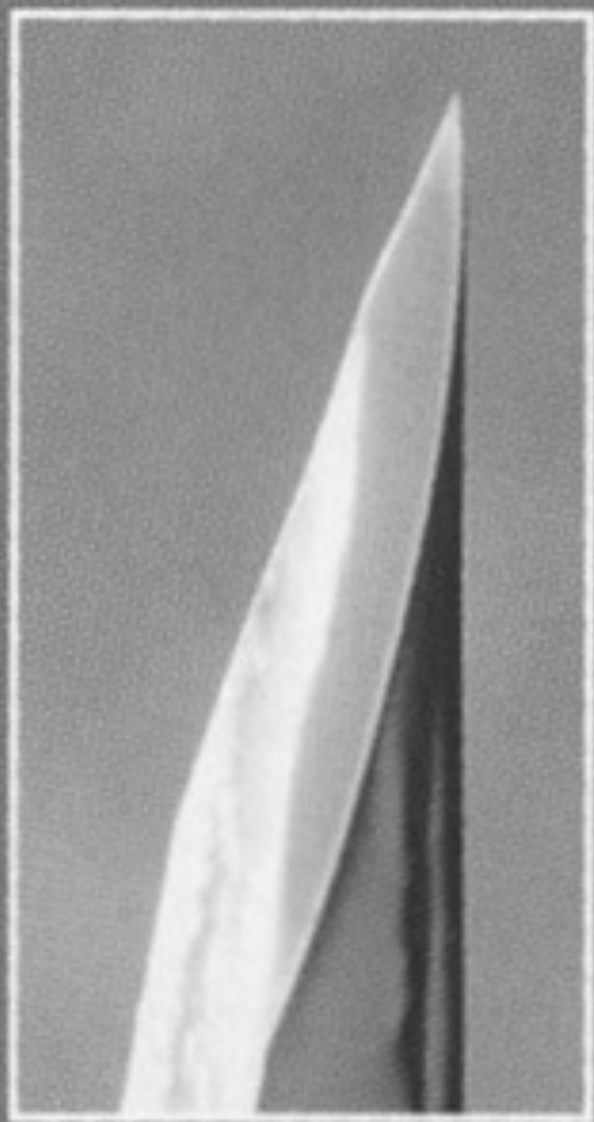
# ***Injections***



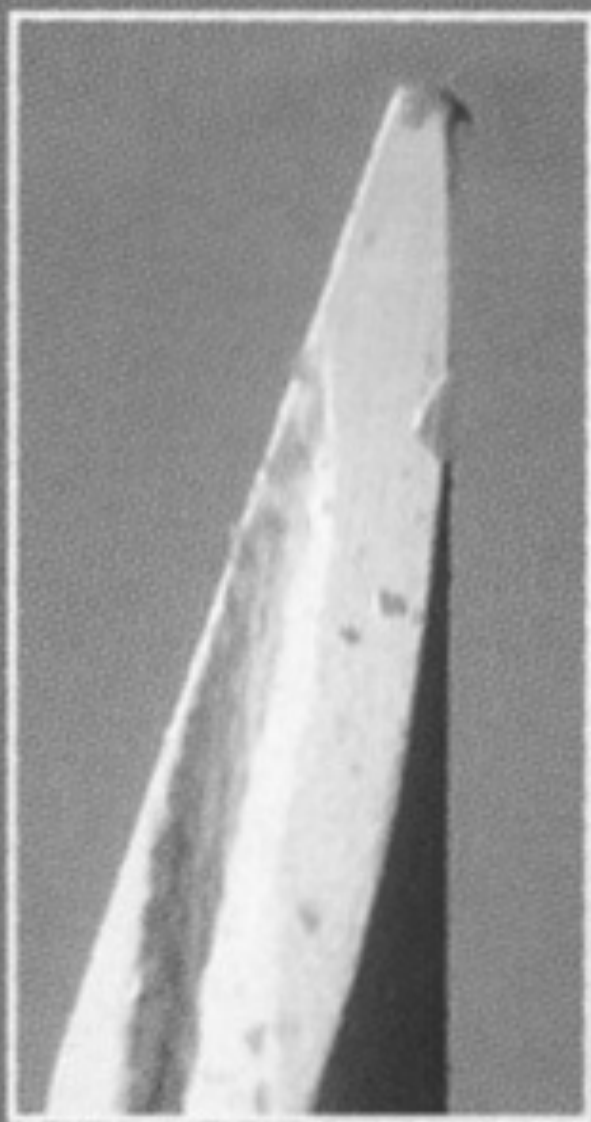
# *Uses depends on...*

- Amount of solution/medication
- Purpose of the injection
- Animal involved
  
- Injections are measured in cc's
- Cc and mL are the same thing.

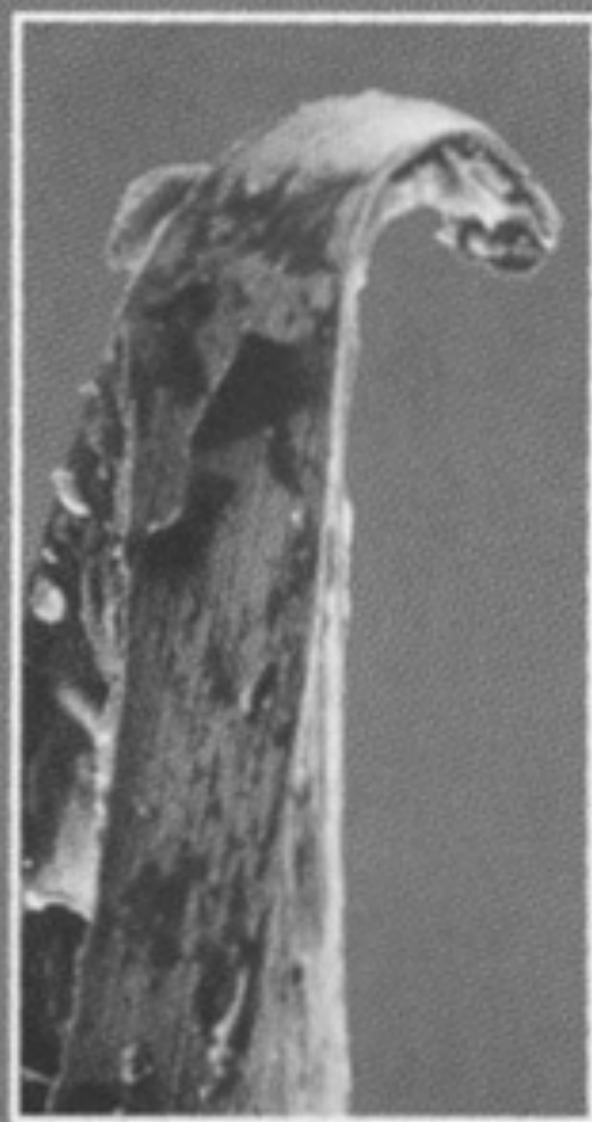




BEFORE USE



AFTER 1 USE



AFTER 6 USES

# Safety

- Make sure area is clear
- Be Sanitary!
- Always scoop cap back on the needle instead of trying to put it on
- Make sure animal is secure.
- Check and read your medication label!!!!!!!

# *Filling a syringe*

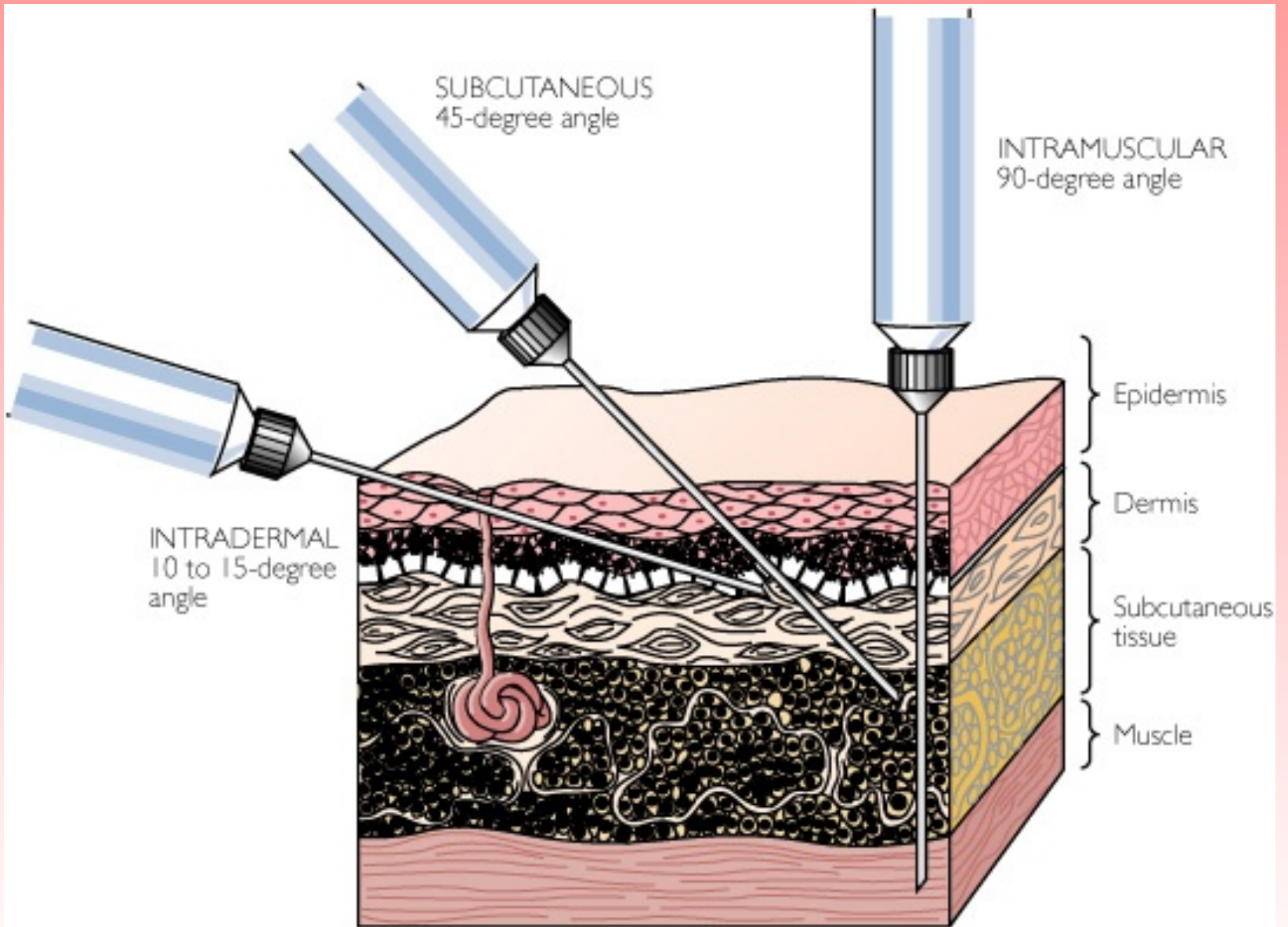


- Read all instructions on the bottle
- Fill barrel with air- stick bottle
- Invert bottle and force the air from syringe
- Pull out plunger to recommended amount-  
remove syringe from bottle
- Remove air bubbles

# Types of Injections

- **Intravenous-** vein- fast action (jugular)
- **Intramuscular-** large muscle (neck, thigh)
- **Sub Cutaneous-** under the skin layer (TB)
- **Intra Dermal-** into the skin layer (slow)
- **Epidural-** into spine
- **Oral-** by mouth- no syringe used, pills
- **Rectal-** Enema
- **Stomach Tube-** nostril, throat
- **Intramammary-** into mammary gland (mastitis)



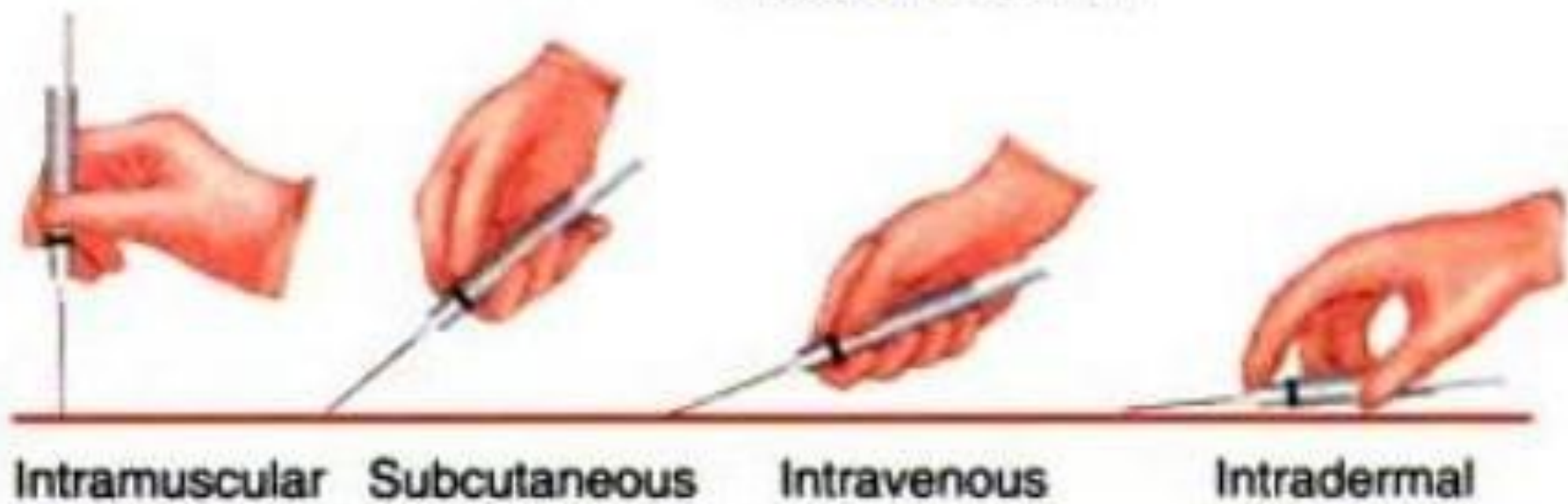






When inserting the needle pull the plunger back to make sure you do not get blood because that means you are in a vein which is not good . Pull the needle out and try again.

Angle of Insertion





# Sub- Q



# Intramuscular



# Are you ready for a LAB?

- Partners and Patient (each  $\frac{1}{2}$  banana)
- Follow the instructions on the worksheet
- Peel the patient to see if you got them into the correct spot.
- **DO NOT EAT PATIENT!!!!!!** They are not sanitary!